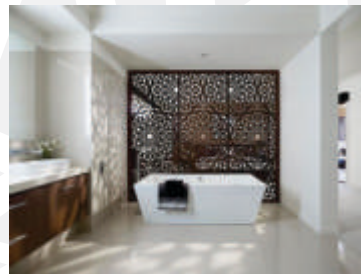




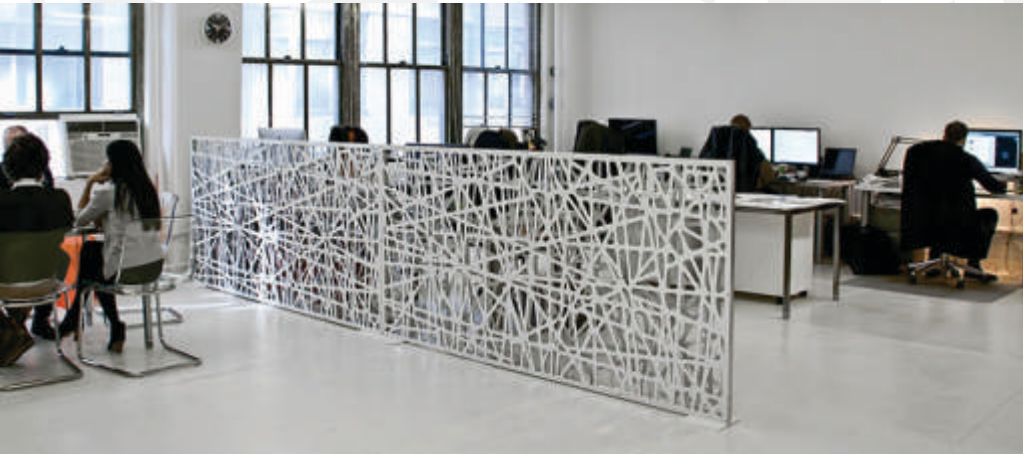
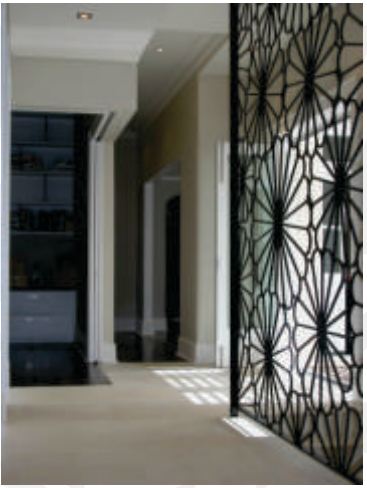
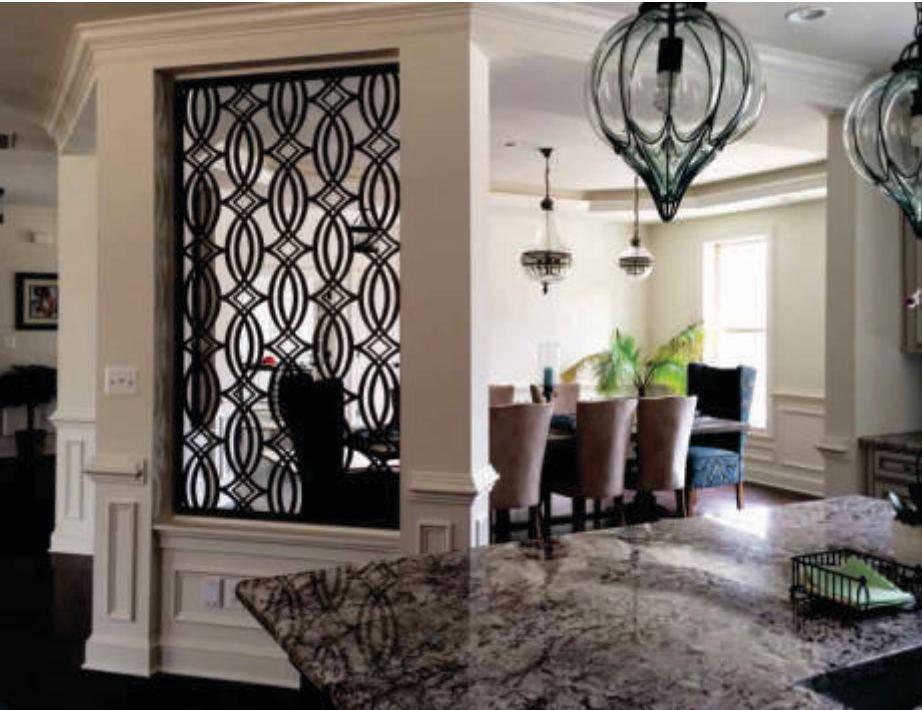
DECOPAT.CA

A r c h i t e c t u r a l & D e c o r a t i v e P a t t e r n s

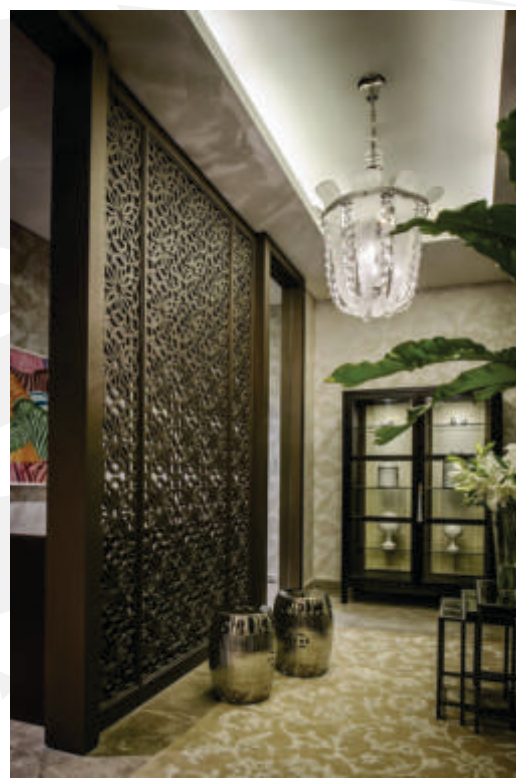
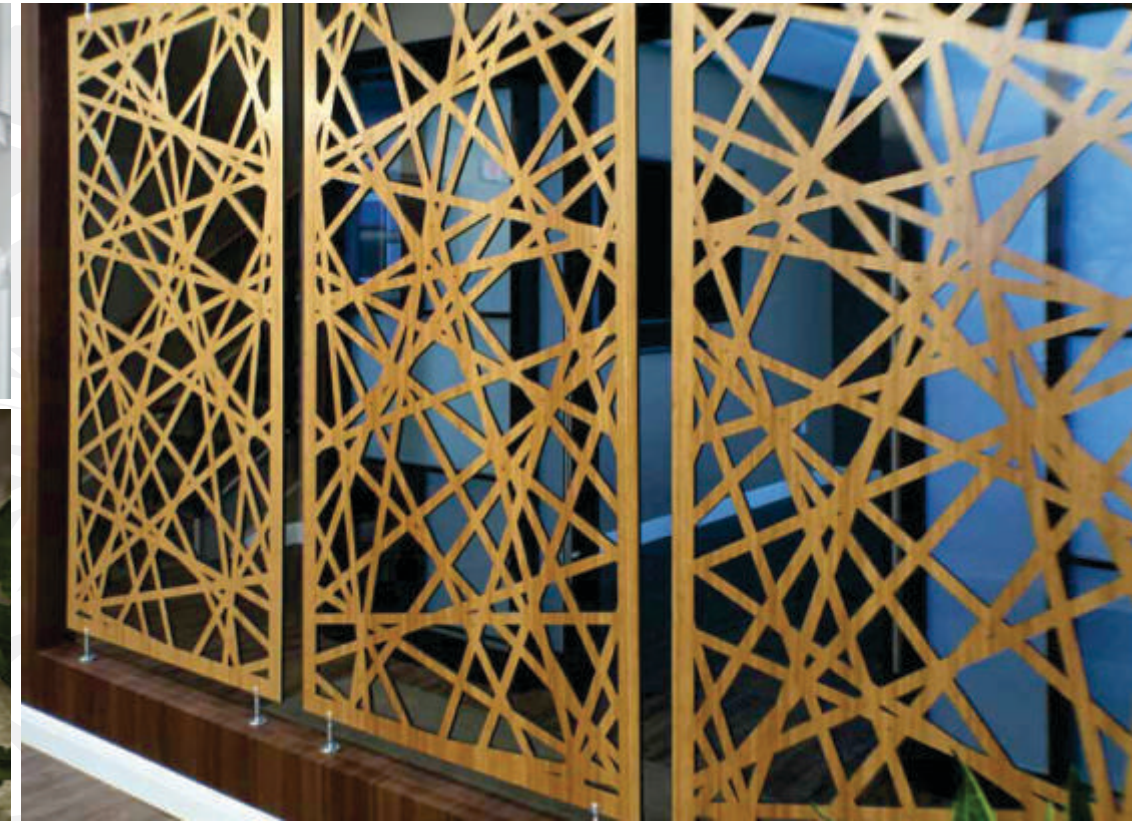
Wall Partitions & Dividers



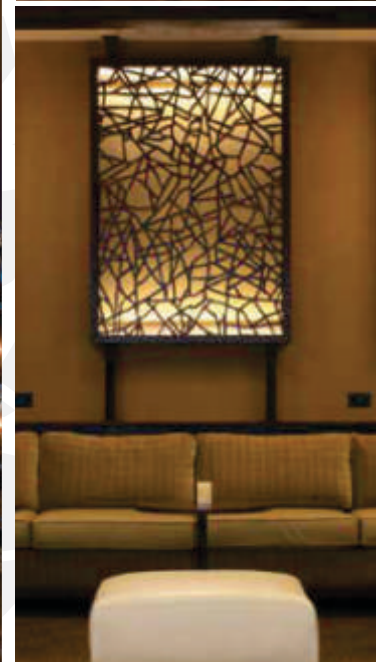
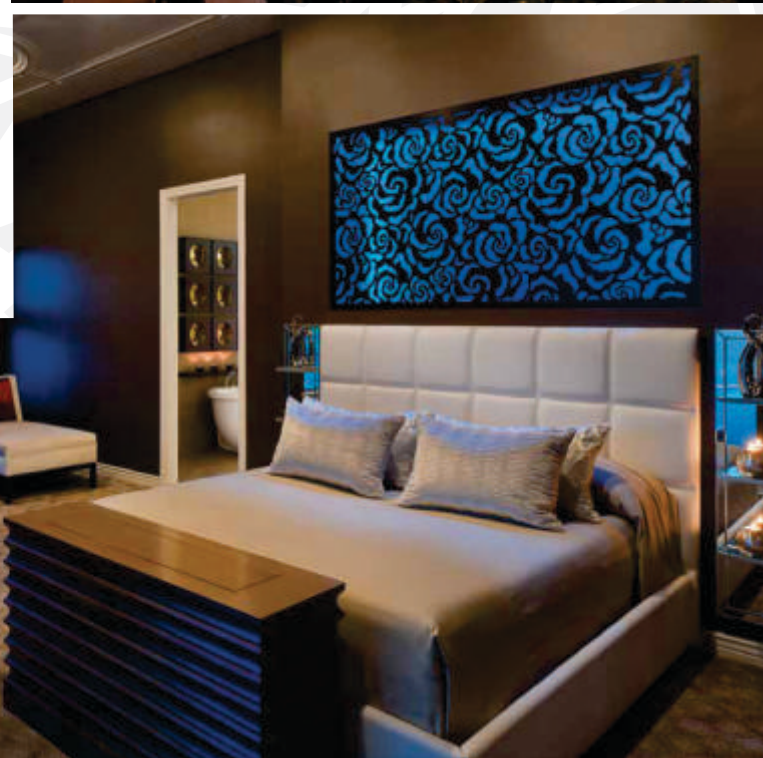
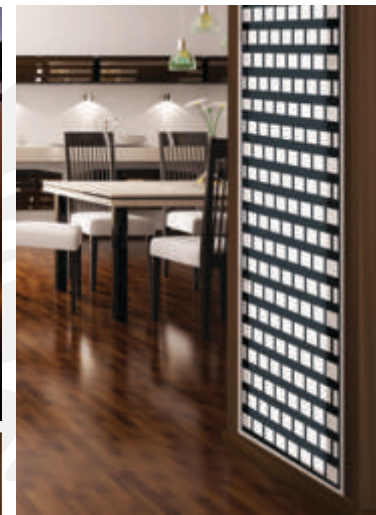
Wall Partitions & Dividers



Wall Partitions & Dividers



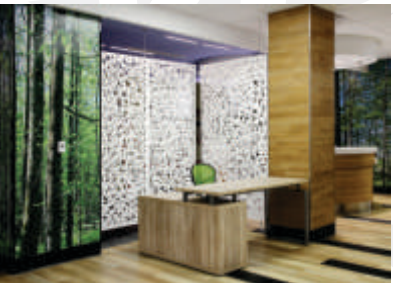
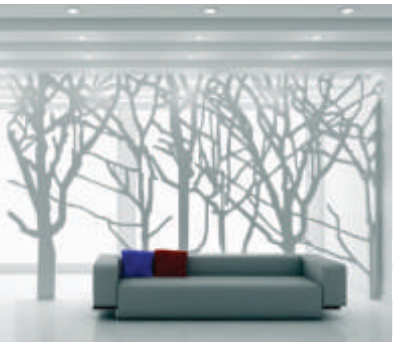
BACK-LIT Panels



BACK-LIT Panels



Commercial Interior



Commercial Interior



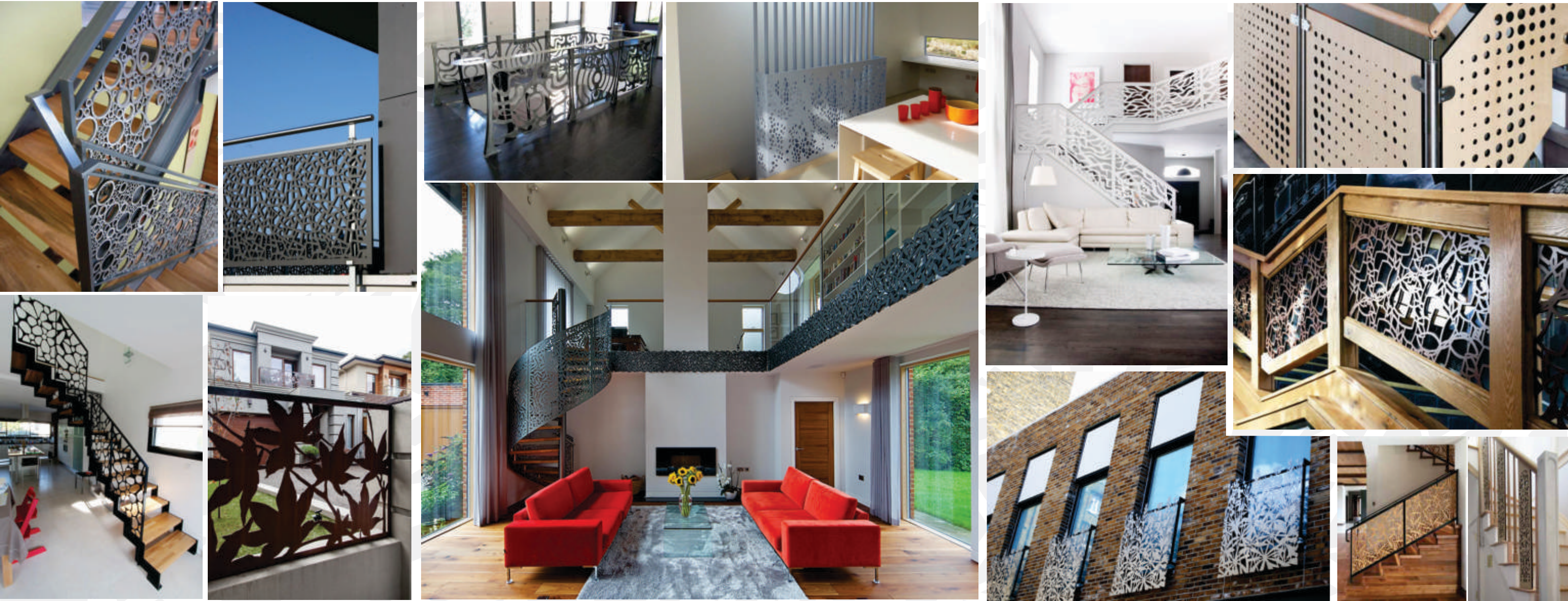
Residential Interior



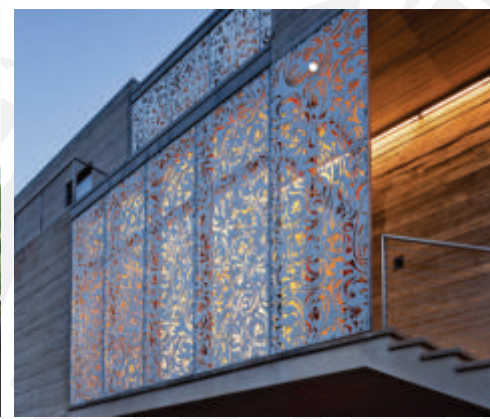
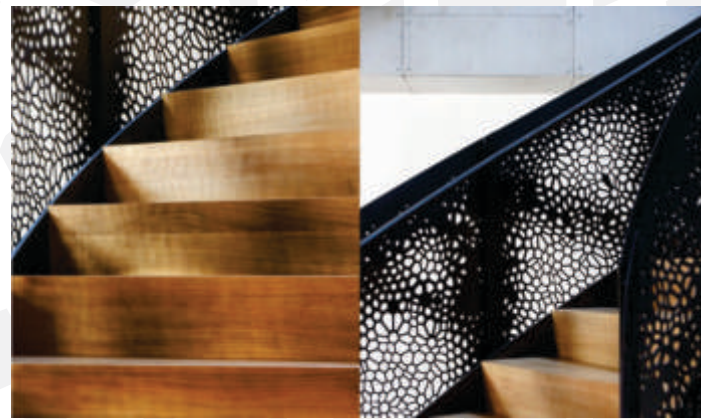
Residential Interior



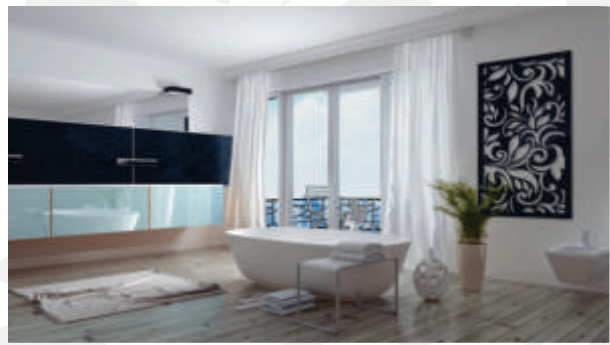
Stairways, Deck Railings & Fences



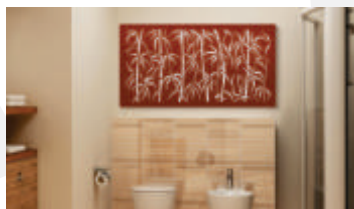
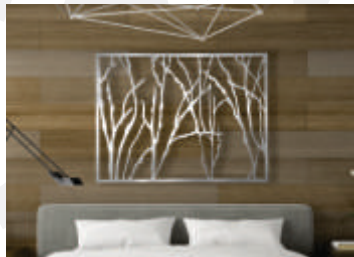
Stairways, Deck Railings & Fences



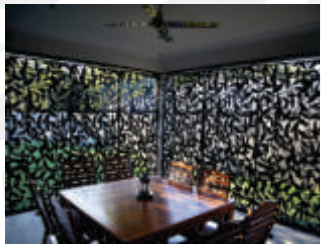
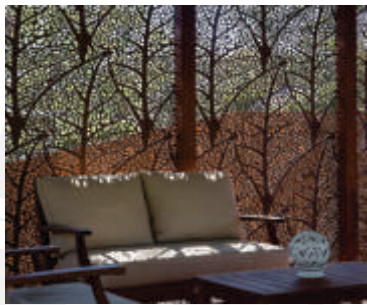
Feature Wall & Panels



Feature Wall & Panels



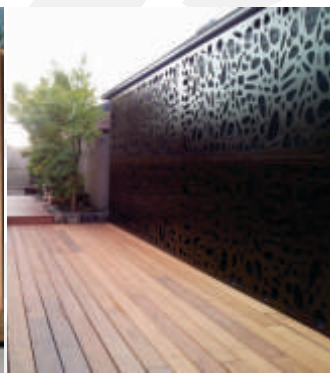
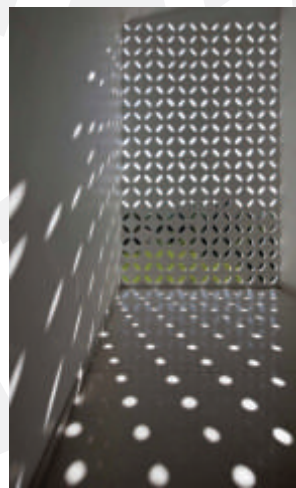
Outdoor (Privacy, Shades)



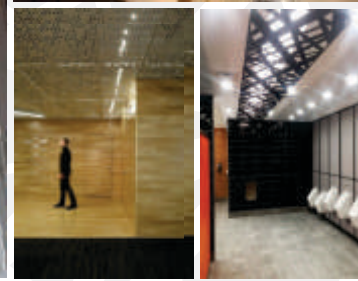
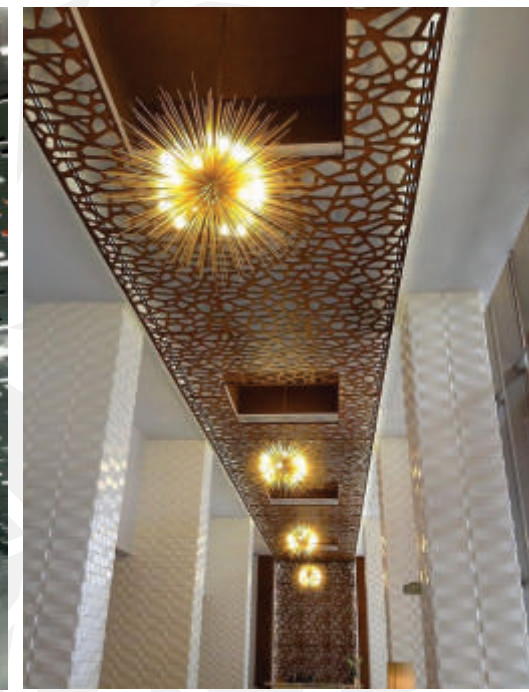
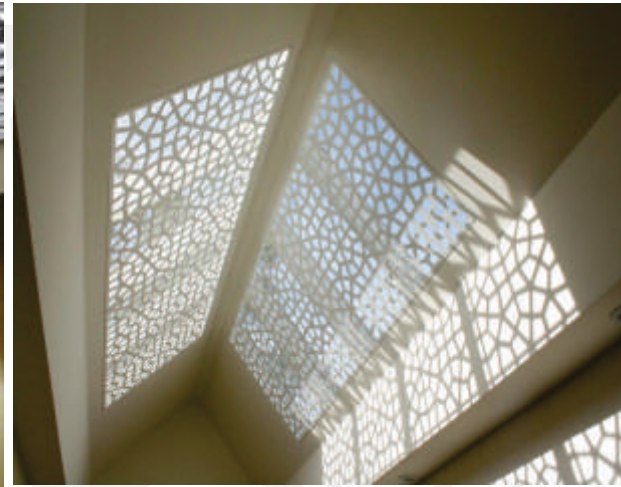
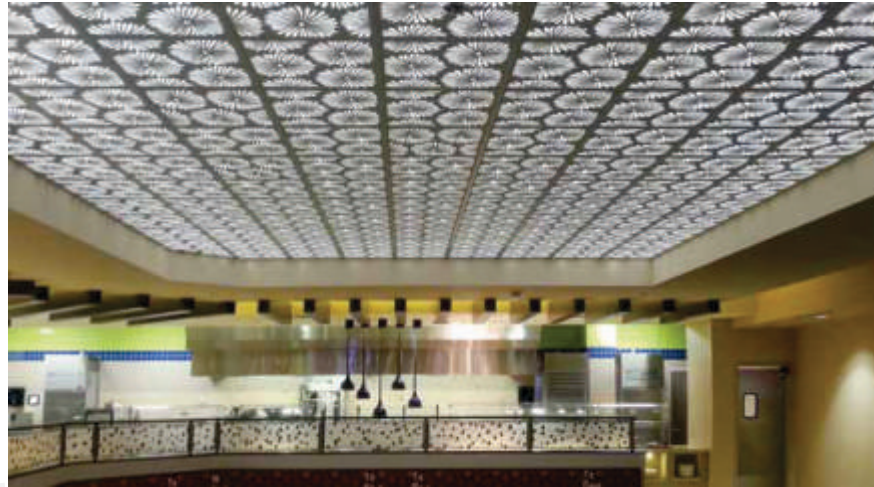
Outdoor (Privacy, Shades)



Outdoor (Privacy, Shades)



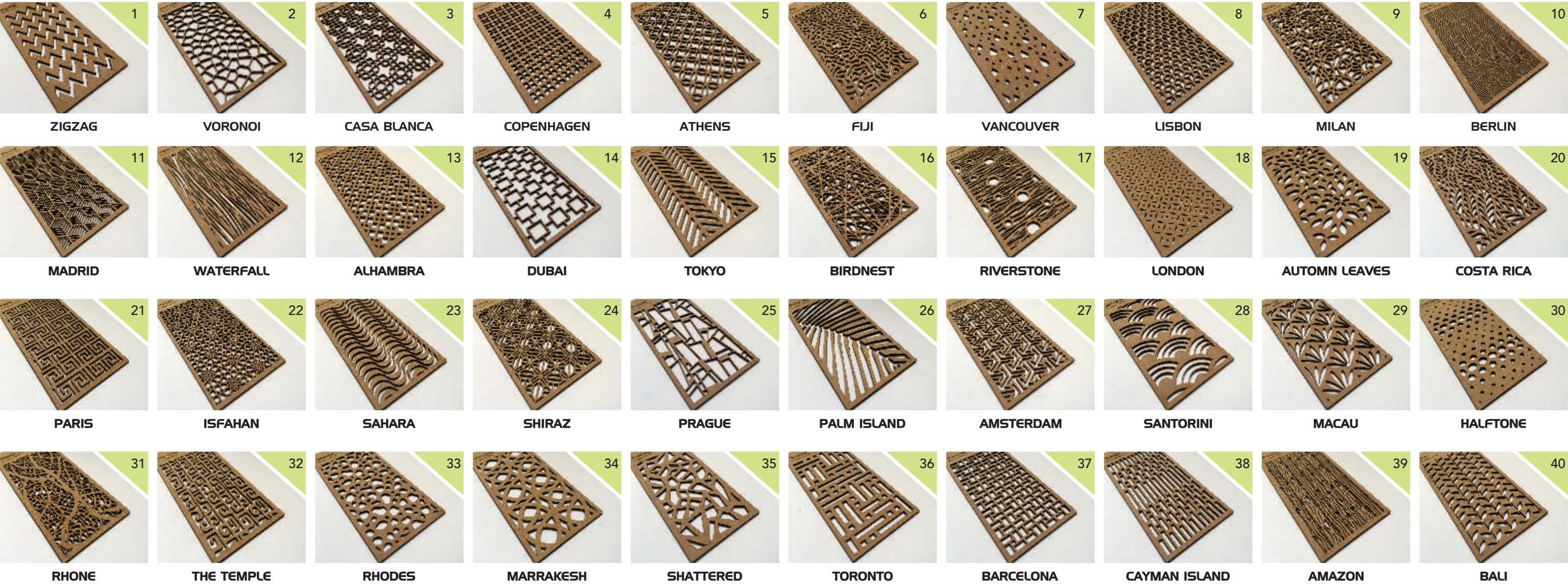
Ceiling & Skylight



Facade & Cladding



Patterns



Patterns

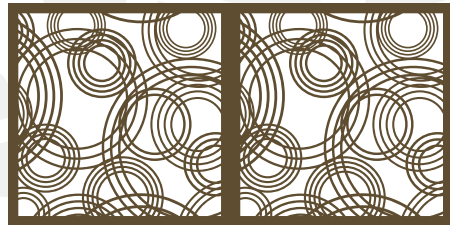


Patterns



more patterns coming every season ...

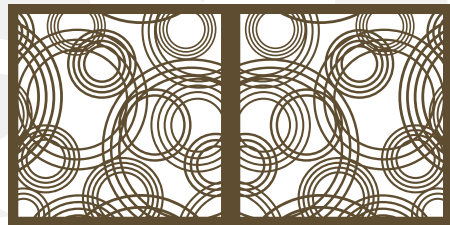
PATTERN OPTIONS



PANEL REPEATED

ONE SETUP FEE

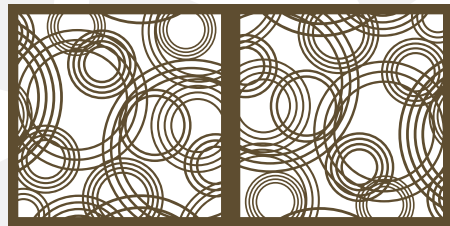
2nd panel is repeated. Pattern can be awkward where pattern meets.



PANEL FLIPPED HORIZONTALLY

ONE SETUP FEE

2nd panel flipped horizontally. Works best using geometric patterns.



PANEL FLIPPED HORIZONTALLY & VERTICALLY

ONE SETUP FEE

2nd panel flipped horizontally and vertically. Works well depending on pattern.



CONTINUOUS ACROSS PANELS

TWO SETUP FEES

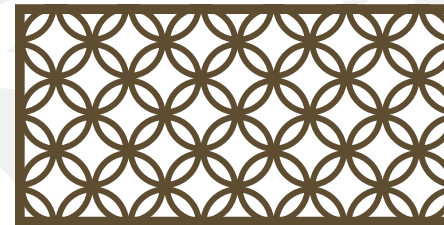
Pattern flows continuously across panels. No border where panels meet. Depending on pattern and it's placement, some pattern pieces may fall out where pattern meets.



BORDER FOLLOWS CUSTOM SHAPE

ONE SETUP FEE

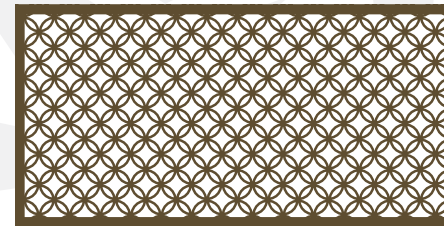
Patterns and borders can follow custom shapes.



PATTERN SCALED UP

ONE SETUP FEE

No charge for patterns scaled up.



PATTERN SCALED DOWN

ONE SETUP FEE

Patterns scaled down are subject to an up-charge. Price increase depends on percent reduced.



CUSTOM PATTERN & SHAPES

SETUP FEE BASED ON PROJECT & ART

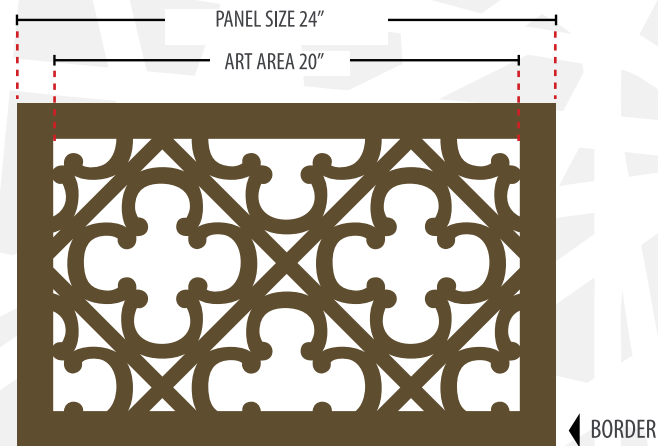
We can use your own custom pattern for your panels. Costs very per project.

BORDER TREATMENT

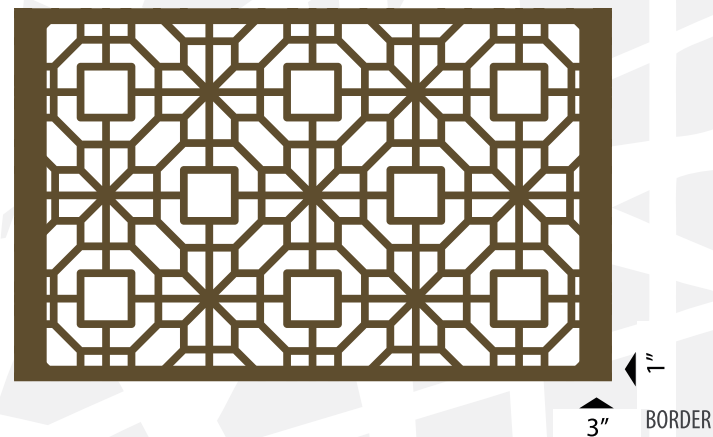
WHAT IS A BORDER ?

A border is the uncut area that extends beyond the artwork. Borders are important for the stability of the panel, creating a finished look, and helpful for installation of the panels. Panel size refers to the total size of the panel, while art area refers to the area on the panels that is laser cut. Standard border size is 1," but can vary according to your needs.

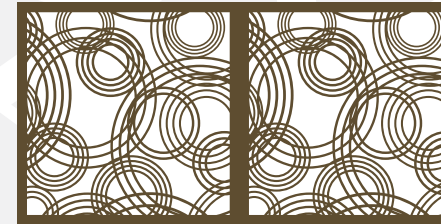
PANEL SIZE VS. ART AREA



BORDERS CAN VARY



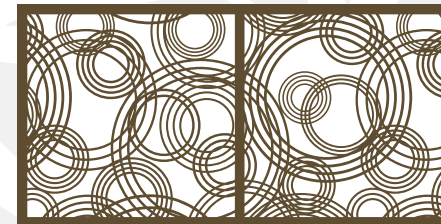
BORDER OPTIONS



BORDER UNIFORM SIZE

ONE SETUP FEE

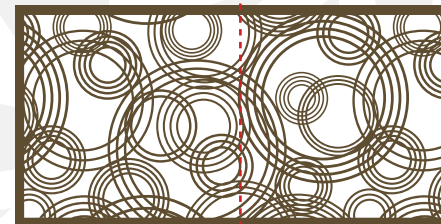
Border remains uniform on all panel sides.



BORDER 1/2 SIZE WHERE BORDERS MEET

TWO SETUP FEES

Border is adjusted to 1/2 where panels meet making the interior border appear the same as the outer borders.



NO BORDER WHERE PANELS MEET

TWO SETUP FEES

Pattern flows continuously across panels. This treatment may not be available for all patterns.



NO BORDER WHERE PANELS MEET PATTERN DICTATES WHERE PANELS ARE CUT

TWO SETUP FEES & CUSTOM PRICING

Pattern flows continuously across panels. Pattern dictates where panels are cut in order to keep pattern intact and keep join area inconspicuous.

FINISHING

PRE-FINISHED WOOD

The most economical choice and best for time-sensitive projects is to use our pre-finished wood choices. Samples are available online or you can request finish samples.

STANDARD FINISHED WOOD CHOICES

- Bamboo
- Cherry
- Dark Walnut
- Clear Coat Walnut

UNFINISHED WOOD

If you will be matching other wood tones or colors in your room design, we can custom paint or stain your unfinished wood, or your contractor can finish your panels along with the rest of the project.

STANDARD UNFINISHED WOOD CHOICES INCLUDE

- Alder
- Cherry
- Maple
- Walnut
- White Oak
- Bamboo Plywood

CUSTOM STAIN

We can custom stain panels to match specific colors used in other areas of a project. We require a sample to match, then provide you with our matched sample for approval. We can also clear coat a special-order veneer. Allow for extra lead time when custom staining.

CUSTOM PAINT

We are happy to introduce internal painting capability. Our primary paint is a 2-part water-based epoxy, which is fast-drying and high-quality. It has very low VOC's and is stronger than regular paint. To match your desired paint color selection, we ask you to provide a paint sample, or paint specifications. We then provide you with our matched sample for approval. Satin, flat, semi-gloss, and high-gloss lacquer finishes are all available, as well as multi-step finishing such as metallic glazed finishes. A longer lead time is required for custom painting.

CUSTOM POWDER COAT ON METAL

The general durability of powder coating is far superior to automotive or industrial paint. It is baked-on resin and cures in a 400 degree oven. It doesn't crack or flake off, sprays on electro-statically, and contains no VOC's — it is an environmentally friendly finish. Unlike painting, it is permanent and does not require re-painting. Through Prismatic Powders, we have a very dynamic and extensive set of colors to choose from and are able to provide samples of specific colors at no charge. Colors include metallic and pearl-essence choices, as well as special finishes for outdoor use.



MATERIAL CONSIDERATIONS

Our standard wood has a core made of MDF (medium density fiberboard) with a select wood veneer attached to both sides. The laser cut edge on an MDF core creates a pleasing uniform, dark color. MDF is a sustainable by-product of the timber industry, that is made completely from recycled, fall-down wood. It is chosen for its resistance to warping. It is SCS, EPP, and LEED certified and made of 100% recycled wood fiber. All of our stock veneers are plain sliced. The A side is book matched and the other side has no knots or voids but is not book matched.

We offer veneers in a wide assortment of wood options — both finished and unfinished. In an effort to provide a sustainable product, all our standard veneer choices are domestically sourced, farmed products.

If your project is in an outdoor or high-moisture area, our outdoor MDF is completely waterproof and stronger than standard MDF. Other outdoor materials include Phenolic and metal. Cold rolled steel and aluminum are most popular metal choices. And to add eye-popping appeal, we have extensive choices for powder coating finishes, including metallic and pearl-essence. Additional materials include acrylic, paper, mat board, felt, and fabric.

Maximum standard panel size is 4' X 8'. Oversize maximum is 59.5" x 119.5"



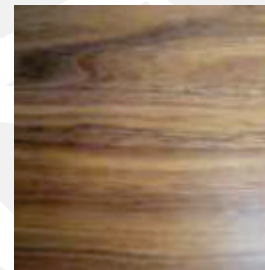
MATERIAL



PRE FINISHED CHERRY

Cherry is our most popular wood choice. The woodgrain is varied and the color is a rich, reddish brown. Cherry wood will develop a darker color over time. Domestically grown.

Standard thickness: 1/8", 1/4", 1/2"



PRE FINISHED CLEAR COAT WALNUT

Using a clear coat finish on our Walnut veneer allows the natural woodgrain to show, and emphasizes the beautiful color. It also makes for easier cleaning and protects the wood. Domestically grown.

Standard thickness: 1/4", 1/2"



PRE FINISHED DARK STAINED WALNUT

Our Dark Walnut veneer finish is custom made for us. It's very dark, rich and uniform in color. Domestically grown.

Standard thickness: 1/4", 1/2", 3/4"



PRE FINISHED BAMBOO

Finished Amber Bamboo has the natural beauty of bamboo with warm, amber tones. Bamboo is a fast-growing, sustainable wood choice.

Standard thickness: 1/8", 1/4"

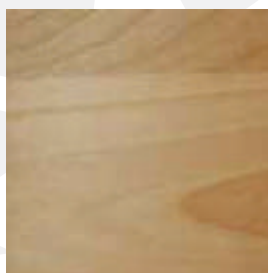


UNFINISHED MAPLE – MDF or PLY CORE

Unfinished Maple is one of our most popular choices, especially for woodworkers. It has a smooth surface suitable for painting or staining a light color. Slightly stronger and easier to paint than MDF. When extra strength is required, we have 3/4" Maple with a ply core, now available as a standard wood.

Standard thickness for MDF CORE: 1/4", 1/2", 3/4"

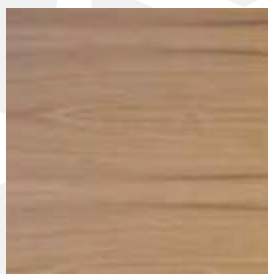
Standard thickness for PLY CORE Maple: 3/4"



UNFINISHED ALDER

Alder is very similar to Maple but slightly darker, and works well if you are staining a medium or dark color.

Standard thickness: 1/4", 1/2", 3/4"



UNFINISHED WALNUT

Our Walnut veneer is a beautiful woodgrain suitable for staining or applying a clear coat to bring out the natural grain.

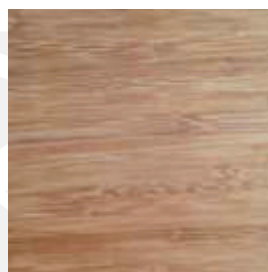
Standard thickness: 1/4", 1/2", 3/4"



UNFINISHED WHITE OAK

White Oak veneer varies from a pale yellow to a brown color, and can be mottled with gray. The grain is very straight with long rays. It is a dense, strong and durable wood.

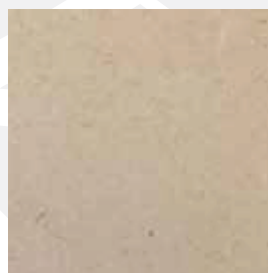
Standard thickness: 1/4", 1/2", 3/4"



UNFINISHED BAMBOO-PLYCORE

We now have unfinished Bamboo with a ply core available as a standard wood. It is a fast-growing, sustainable wood choice and the ply core is extremely strong. It can be stained or clear-coated and is also beautiful if left unfinished.

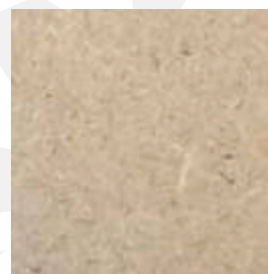
Standard thickness: 1/8"



MDF

Multi-density fiberboard is our most economical choice. Its surface is flat and smooth, uniform, dense and free of knots or grain patterns. It makes a superb carrier for veneers. It is recommended for painting applications, and is not recommended for staining.

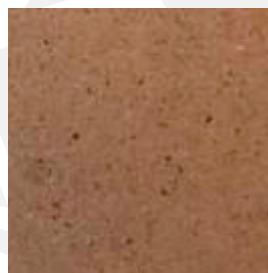
Standard thickness: 1/8", 1/4", 1/2", 3/4"



OUTDOOR MDF

Outdoor MDF is an excellent choice for outdoor use. It is a heat and pressure-treated material made from non-toxic materials. It is waterproof, paint adheres to it easily and it has an impressive fifty year warranty.

Standard thickness: 1/4", 3/8", 1/2", 3/4"

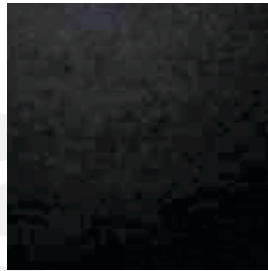


FIRE RATED MDF

Fire rated MDF is a sustainable Class 1 retardant rated fiberboard. An additive is blended with the fibers during processing to spread flame retardant throughout the board. It can be sanded and painted without diminishing its fire retardant qualities.

Standard thickness: 1/8", 1/4", 1/2", 3/4"

BACKING MATERIAL



PHENOLIC

A great choice for an outdoor application, phenolic is made from resin and paper and is extremely strong and dense. It is available in a beautiful matte black color which does not need any inishing. It also takes paint well.

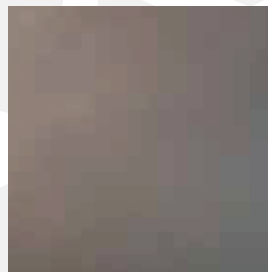
Standard thickness: 1/4"



ACRYLIC

Acrylic is available as a special order in various colors and degrees of transparency. It can be laser-cut or used as a backing material.

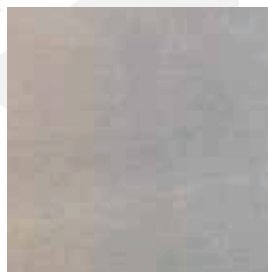
Various thicknesses and colors available



COLD ROLLED STEEL

A versatile alternative for both interior and exterior applications. Finish with UV stable powder coating to ofer an array of colors and textures.

Thickness: 10 ga. (.135"), 11 ga. (.119"), 12 ga. (.104")



ALUMINUM

Another perfect choice for exterior use, aluminum panels are relatively lightweight and can be installed outdoors without powder coating.

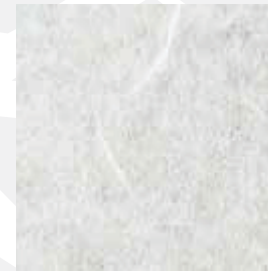
Thickness: 3/16", 1/4", 5/16", 3/8"



LIGHT-DIFFUSING ACRYLIC

If you will be back-lighting a panel, this is an excellent choice for a backing material. It difuses light well, and has a uniform frosted look. Matte one side, shiny one side.

Standard thickness: 1/16", other sizes available



WHITE LAMINATED SHOJI PAPER

Laminated Shoji paper has a beautiful, textured surface. It is surface washable and very durable. White has a rice-paper look.

Thickness: 2mm; Max. width: 3ft.



TAN LAMINATED SHOJI PAPER

Laminated Shoji paper has a beautiful, textured surface. It is surface washable and very durable. Tan is more uniform in color than white.

Thickness: 2mm; Max. width: 3ft.



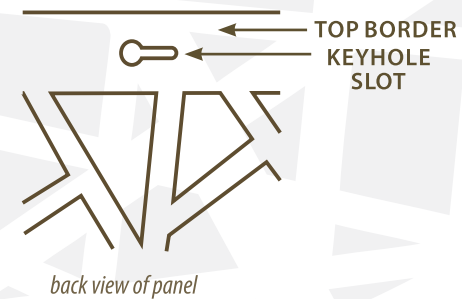
PRIVACY PAPER

This thin material is a paper-plastic-paper "sandwich" that is water and tear resistant and evenly translucent.

Thickness: .005" Max. width: 48"

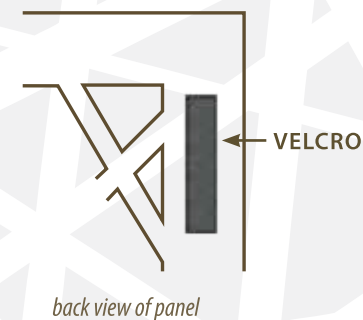
HANGING OPTIONS

At Lightwave Laser we know that every space is different and requires a creative solution in hanging or installing your panels. We have considered panel thickness, size, weight and environment in our recommendations for panel installation. While we continue to discover more creative solutions to fit your needs, here are a few options to consider.



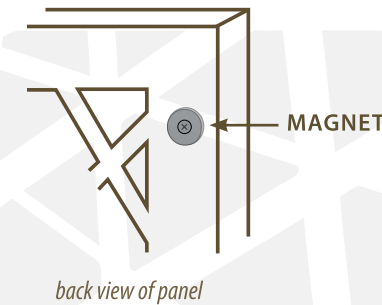
KEYHOLE SLOT

A Keyhole Slot on the back of your panels makes hanging convenient and quick. This is possible on panels .5" or thicker. In hanging the panel in this fashion, the panel sits flush against the wall, and is easy to remove for cleaning etc. We recommend this method of hanging for panels smaller than 4' x 4'.



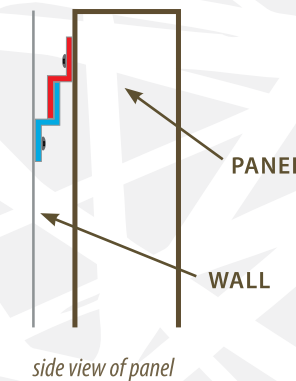
VELCRO

Velcro is another easy way to hang your panels. While it is not suitable for large or heavy panels, Velcro is great for thin panels, allows the panel to sit close to the wall (approx. 1/8"), and is ideal for window covers because of how easily you can remove and reinstall them. We do recommend reinforcing the Velcro with glue or staples especially in areas where temperature fluctuates a great deal.



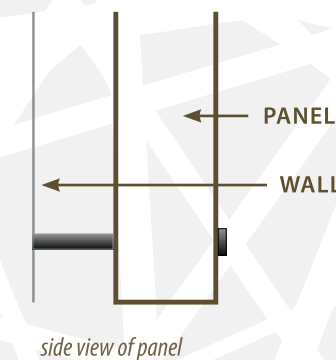
MAGNETS

Using magnets to hang your panels is another creative option. We recommend only implementing this method if the panels are .5" or thicker. Each panel may require a different number of magnets depending on weight and size. Magnets hold approximately 5lb each and may be used on wall and panel, or on the panel when attaching to a steel frame.



Z BRACKET

Z Brackets installed at the top and bottom of your panels provide an extremely strong and stable installation of your panels. This method is ideal for larger panels or heavier panels.



BOLTS/STANDOFFS

Bolts or standoffs can be used for any size panel, in any thickness or weight. With this method, the spacing between the wall and panel can vary, which allows the panel to be backlit or spot lit if desired. Using this approach creates a more sculptural look.

PRICING

Prices vary according to the inish selection and thickness.

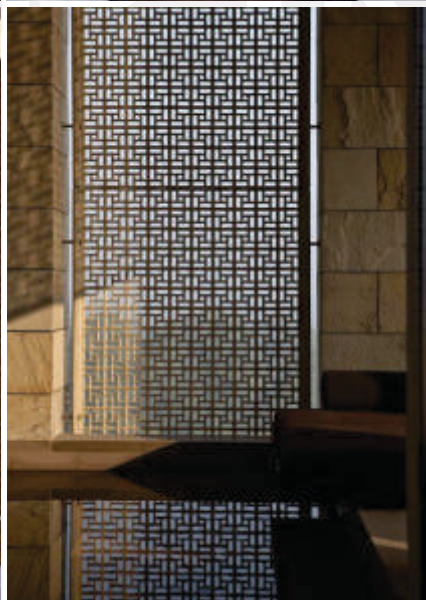
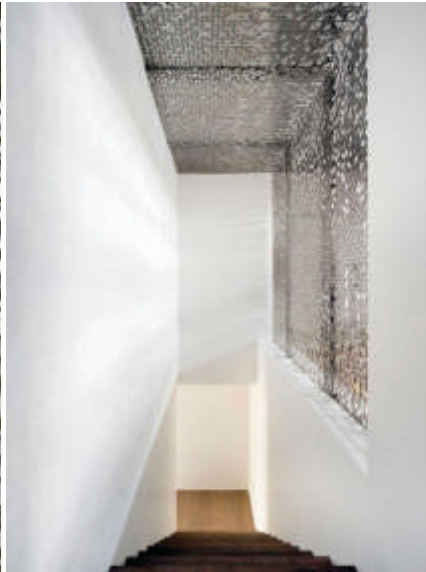
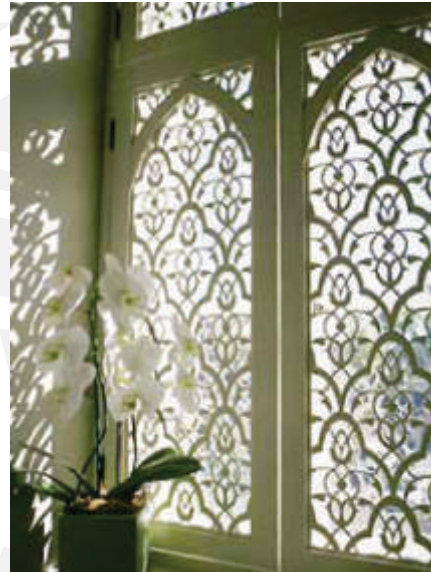
- 1/4" MATERIAL AVERAGES \$14 - \$24 /sq ft
- 1/2" MATERIAL AVERAGES \$19 - \$29 /sq ft
- 3/4" MATERIAL AVERAGES \$23 - \$35 /sq ft

There is a \$100 set-up fee for each diferently-sized artwork. Oversize wood has premium pricing. Discounts may apply for larger projects. Please inquire.

LEAD TIME

Lead time is determined by art, materials, and any custom work your project requires. Projects requiring custom art or custom inishing or any other custom work will have a longer lead time, while stock art and materials will have a shorter lead time. Please contact us if your project is large in quantity or if there are scheduling considerations.

- STOCK ART & MATERIALS WEEKS 3-4
- ADD CUSTOM FINISH +1 WEEK
- ADD CUSTOM WOOD +1 WEEK
- ADD MULTIPLE CUSTOM OPTIONS OR METAL, LEAD TIME DETERMINED ON A PROJECT BY PROJECT BASIS.



RUSH FEES

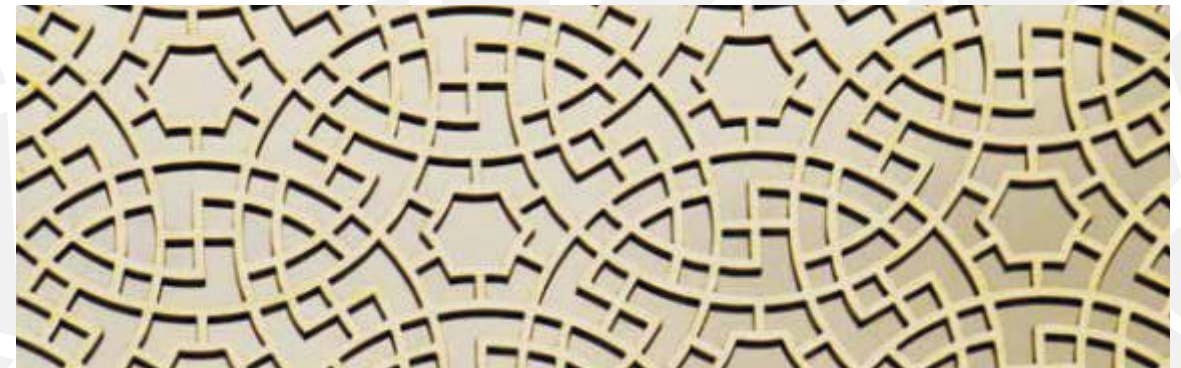
Depending on our job load, putting a Rush on your job may be an option. Price depends on the timing and scope of your project, but generally starts at \$350.

CUSTOM PROJECTS

Though we have an expansive library of patterns to choose from, we also specialize in being able to create a laser-ready pattern or artwork from your inspiration. If you are providing us with a digital ile, we require vector art files rather than raster. Preferred formats are .ai, .pdf, .eps, .dxf, .dwg. We look forward to collaborating on your custom project, and custom art creation.

SHIPPING INFO

We ship using common carrier and use a streamlined process to provide you with the best price, as well as a dependable and prompt delivery. We send tracking information to you as soon as it is available. We ask that you inspect the crate for any damage before accepting the shipment.



ORDER PROCESS

SELECT »

- Application
- Material & Finish
- Pattern

The creative process unfolds as you choose how your panel will enhance your project. Deciding on the best way to display your panel, picking the pattern and material, and choosing a finish, are all decisions that can be discussed with our supportive sales staff. They are happy to offer advice, make recommendations and send out samples.

QUOTE »

- Phone call or online
- Discuss pricing
- Finalize sizing

This phase of the process includes you supported by our excellent customer service, discussing your needs specifically and making suggestions for optimum outcome. Aesthetics, safety and environment, affordability and durability are all considered as your quote is promptly prepared. Discussions include set-up fees, border size, pattern scale, material type, pattern and thickness.

CONFIRM »

- Confirm order
- Pay Deposit

Once details are finalized and your project is ready to order, a 50% deposit is required. When the deposit is received, your order is confirmed and your lead time commences. Your order is put in the production queue, and our art department creates a proof. We re-confirm measurements and you sign off on the project.

PROOF »

- Receive Proof
- Revise if needed
- Approve Proof

A proof of your panel is created, displaying both pattern and border, including relevant details of dimensions, wood choice, thickness, finish and panel quantity. A shipping estimate is also included. Minor adjustments can be made regarding borders and scale, but significant changes cause additional charges. Prompt customer approval and communication is essential to keep the project to the targeted date.

PRODUCTION »

- Manufacture
- Inspection
- Crate

Your panels are cut and finished to your specifications. All panels are inspected and prepared for shipping. Depending on size and weight, your project is packaged in a custom rigid plywood crate and sandwiched in layers of foam. Our shipping process is streamlined to provide you with the best price and most reliable and prompt shippers.

DELIVERY

- Ship
- Delivery
- Inspection & Signature

You are notified when your project is ready to ship. Our sales team assists you through the remaining details, providing shipping and tracking information, collecting final payment and offering any relevant installation advice. Once crate arrives be sure to inspect the crate for any damage before giving your signature for delivery. Our customer support team will confirm arrival of your panels with you and ensure your satisfaction.





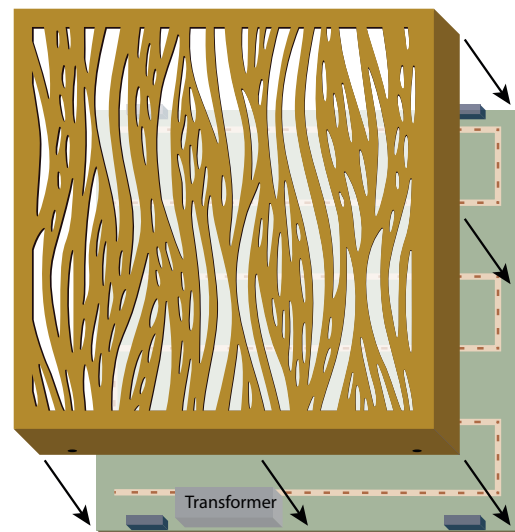
DECOPAT.CA

LIGHTBOX ASSEMBLY

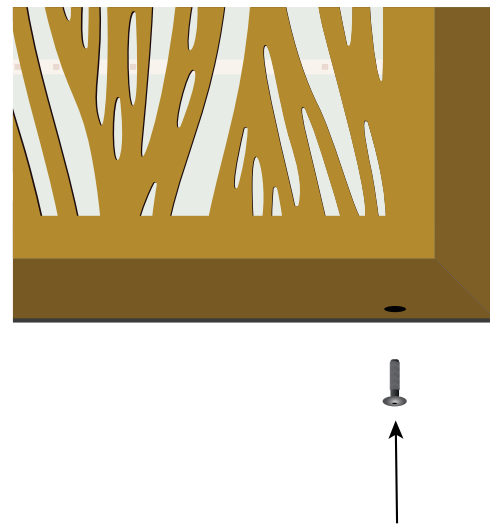
Lightboxes can be a beautiful lit piece of art or signage. A 4 inch deep lightbox is our standard lightbox depth. We can make them as shallow as 2.5 inches for an additional cost, if needed. Maximum depth is 6-8 inches. Lighting can be assembled on just the perimeter, which gives the lightbox a pleasing gradation of light from perimeter to center. Alternately, lights can be built evenly across the backing board to create an even distribution of light from within.

There are many dramatic color options available. Warm or cool white light is a standard, and we also offer color changing lightboxes that fade through RGB colors, or can be set to one specific color. One remote can control multiple lightboxes for your convenience and ease of use. And perhaps best of all, they will all have a dimmer.

Lightboxes come ready to hang with a 3, 6, or 9 foot power cord in the back. They can be hard-wired if requested. The transformer will be built inside the box, unless your electrician has requested for it to be on the outside.

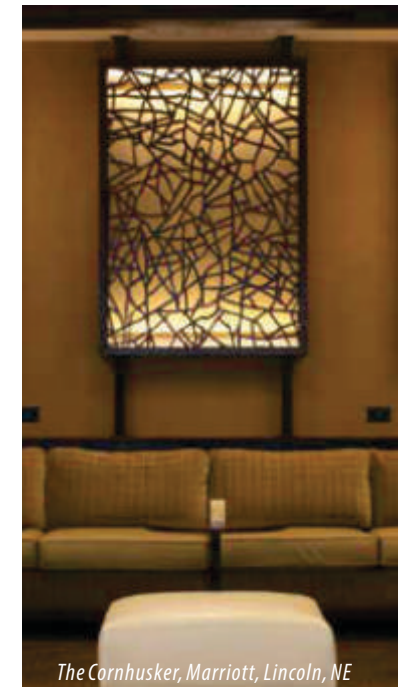


lightbox



detail of lightbox mounting to backing board

- 4" deep box fits over backing board with lighting and attaches with flathead screws, flush with edge, at top and bottom.
- 120 volt power goes into transformer
- 4 watts per square foot of lightbox
- Transformer makes 12 or 24 volts DC
- Dimmer adjusts down from max voltage
- Boxes are turned off by switch on wall
- Light-diffusing frosted acrylic panel is flush behind laser cut panel.
- LED light attached to backing board, 4" spacing between rows and .66' between lights
- Backing Board is 1/4' MDF
- Lighting will be ready for hard wiring, or optional power cord
- Transformer rests on bottom of box



The Cornhusker, Marriott, Lincoln, NE